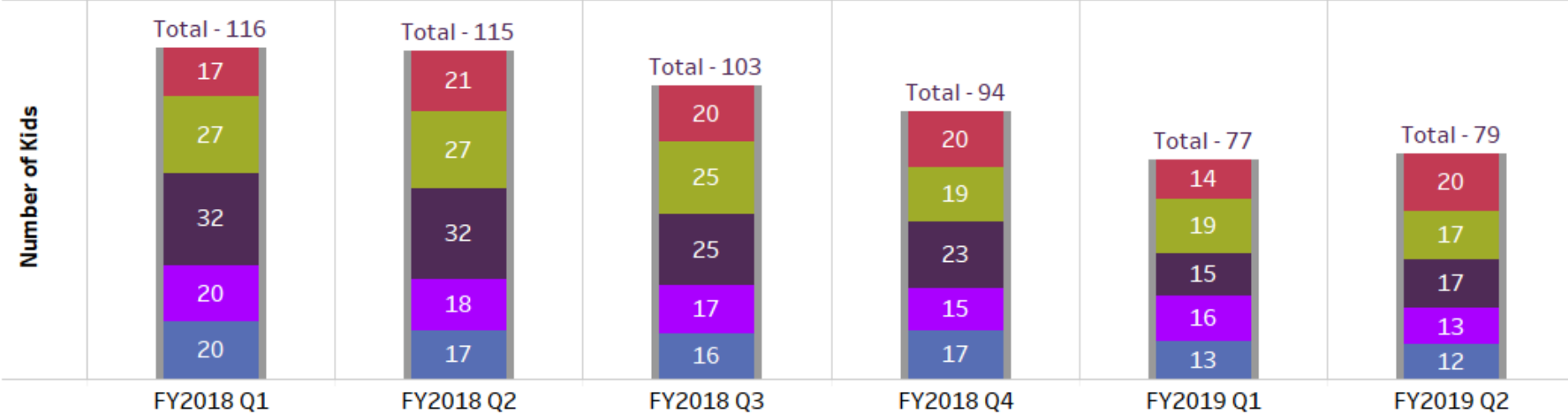
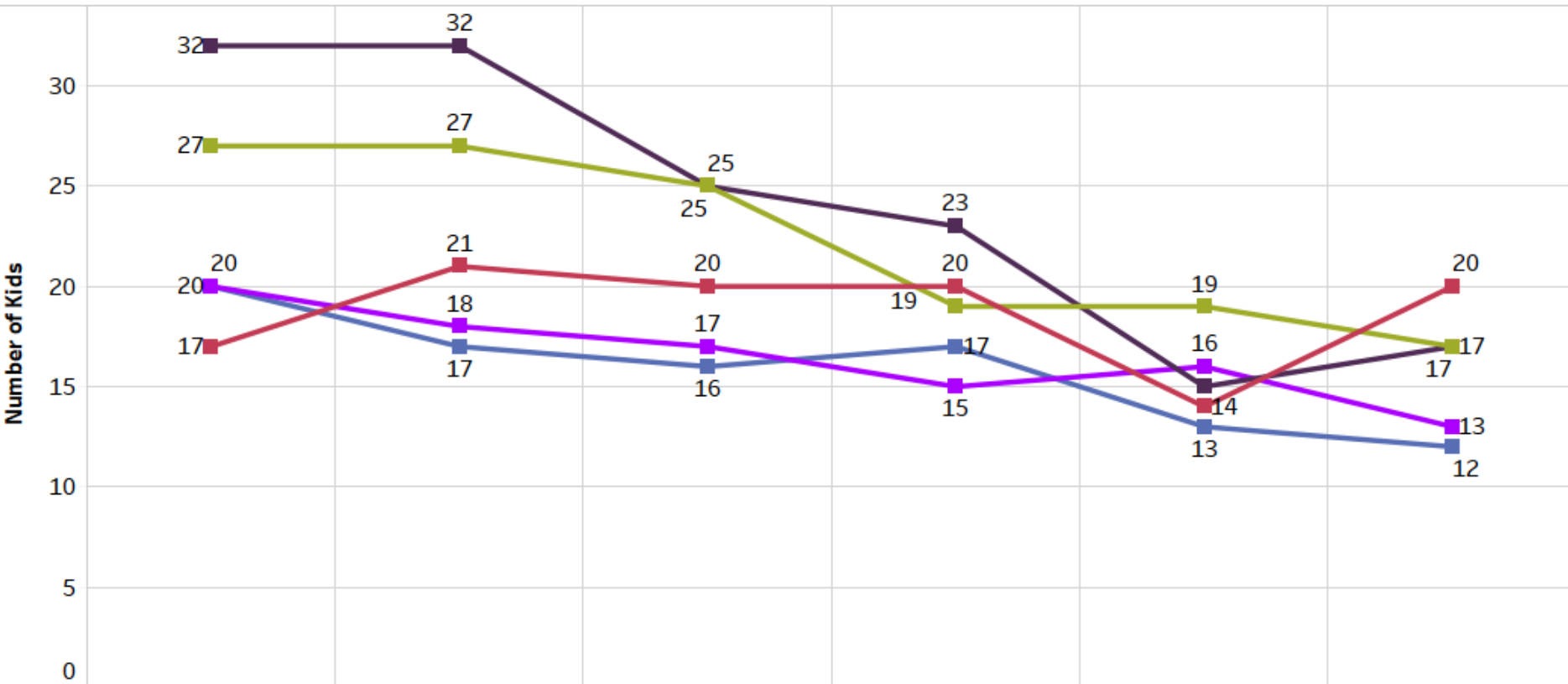


Judge's Quarterly  
Management Review  
August 7<sup>th</sup>, 2019

# Foster Home Analysis

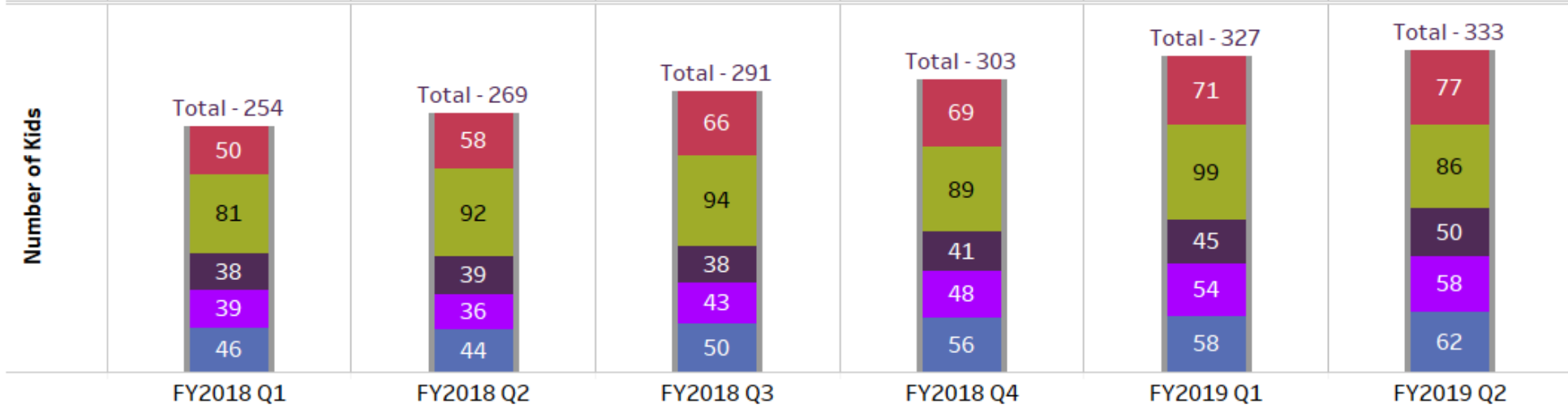
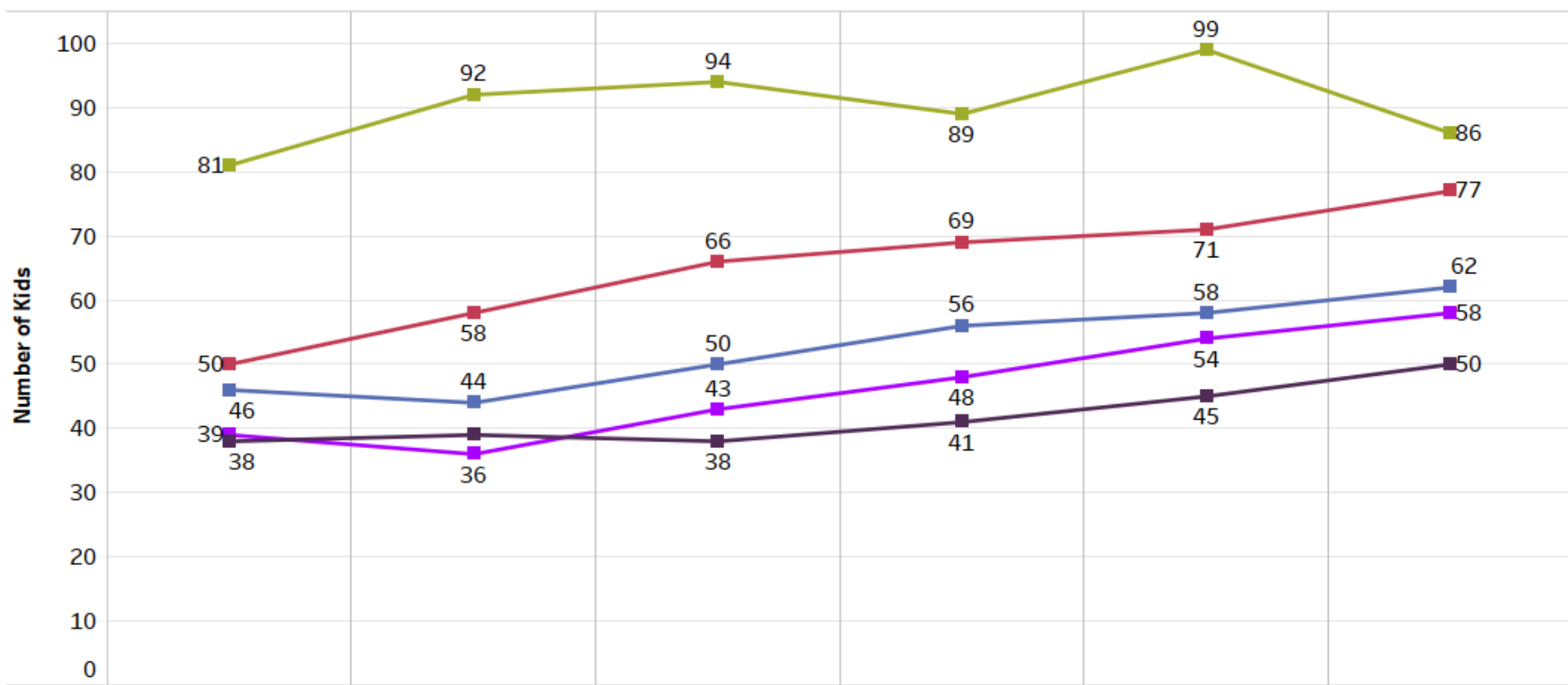
# Residential use by agency (FY2018 - FY2019)

- Agency
- Bethany Christian Services Inc-Grand Rapids
  - Catholic Charities West Michigan - GR
  - Da Blodgett For Children
  - Samaritas - West
  - Wellspring Lutheran Services Kentwood



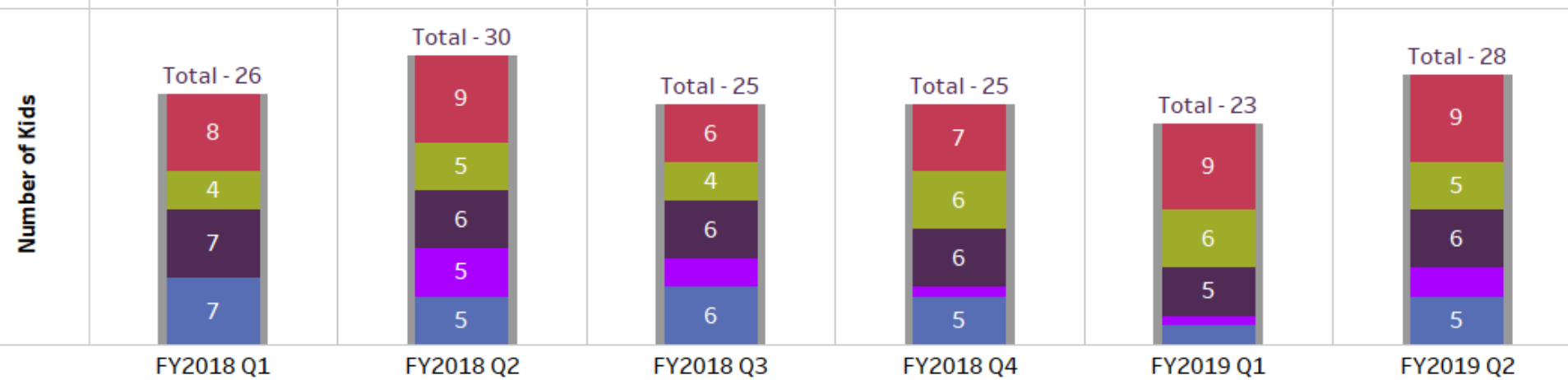
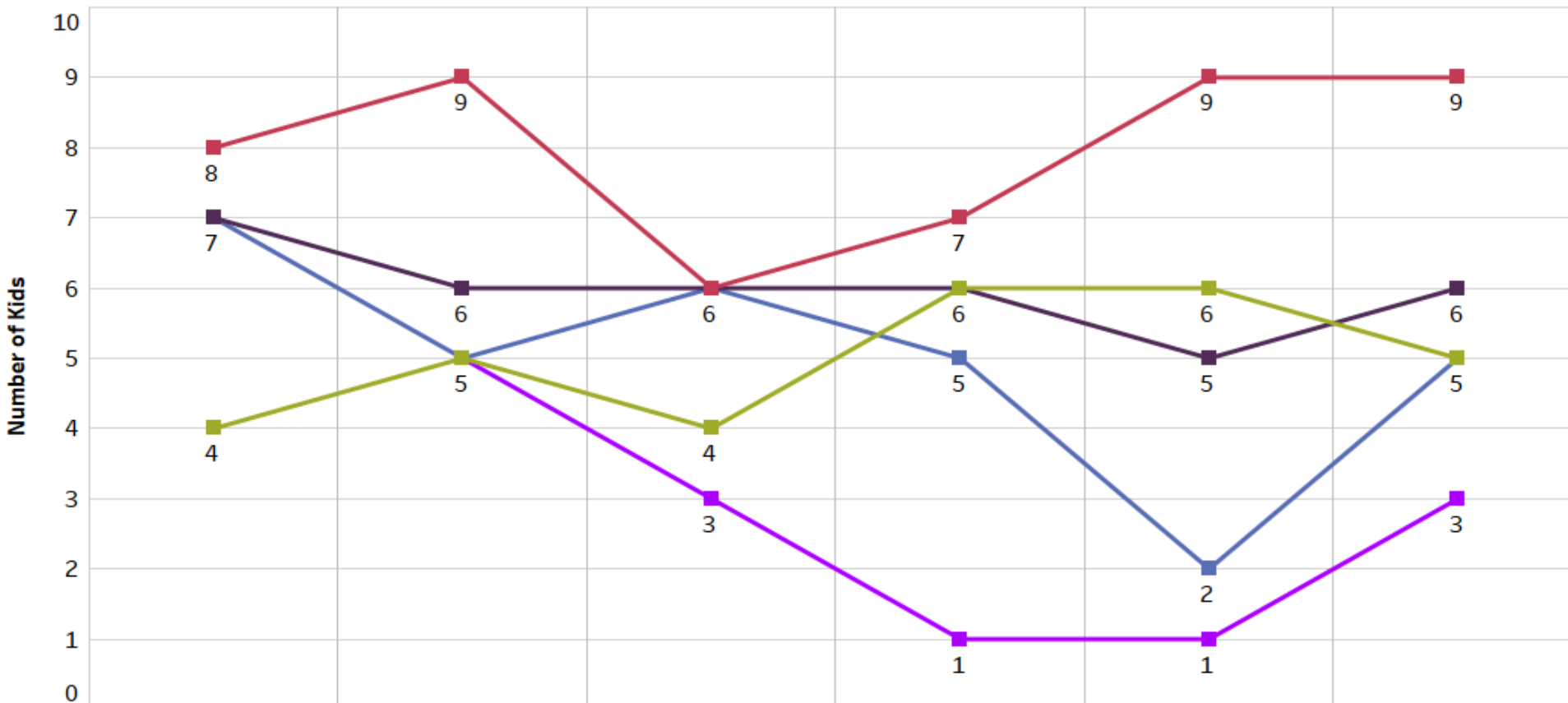
# Relative Home use by agency (FY2018 - FY2019)

- Agency Name**
- Bethany Christian Services Inc-Grand Rapids
  - Catholic Charities West Michigan - GR
  - Da Blodgett For Children
  - Samaritas - West
  - Wellspring Lutheran Services Kentwood



# Shelter usage by agency (FY2018 - FY2019)

- Agency**
- Bethany Christian Services Inc-Grand Rapids
  - Catholic Charities West Michigan - GR
  - Da Blodgett For Children
  - Samaritas - West
  - Wellspring Lutheran Services Kentwood



# Number of licensed foster homes in high removal zip codes (as of 10/1/17 and at 6/25/19)

