



ANNUAL REPORT

FY20: 10/1/19 – 9/30/20
 Compared to FY19
 Data Source: Mindshare

2020



TRANSFORMING FOSTER CARE

Michigan Partnership for Children (WMPC) is funded by the Michigan Department of Health and Human Services (MDHHS), piloting a performance-based foster care model in Kent County, Michigan. WMPC just finished the third year of the five-year pilot, showing significant improvement for the children and families in care. This pilot is a data-driven, innovative, collaborative approach to administering foster care and will transform child welfare.

WMPC oversees the placement and outcomes for approximately 700 children in foster care on any given day. WMPC holds contracts with five private foster care agencies:

- Bethany Christian Services
- Catholic Charities West Michigan
- D.A. Blodgett- St. John's
- Samaritas
- WellSpring Lutheran Services

WMPC LAUNCHES A.L.L.Y PROJECT



Made possible by the Grand Rapids Community Foundation's LGBTQ+ Fund, we launched the new A.L.L.Y (Affirming and Listening to our LGBTQ+ Youth) Project. The project seeks to build a foundation and infrastructure for Kent County's foster care system that welcomes and affirms LGBTQ+ youth and caregivers. In collaboration with JF Consulting, MDHHS and our partner agencies, the project goals include:

- Creation of a Gay/Straight Alliance
- Improved experience for those identifying as LGBTQ+ in the Kent County child welfare system
- Additional cultural competency training for all staff and partners

[PRESS RELEASE AND DETAILS](#)

1,005 children and youth served in foster care and adoption



307 Kent County children exited foster care

42% returned home to their parents

40% were adopted

9% were appointed legal guardians

COVID-19 AND FOSTER CARE

COVID-19 has certainly created challenges in child welfare. The closure of schools and programs restricted the number of individuals trained to report the suspicion of abuse or neglect. As congregate care settings such as children's residential centers increase one's risk of exposure and spread of COVID-19, WMPC and partners expedited discharges from group homes into the community whenever safe and possible.

From March to December 2020, 19 children returned to the community from residential settings.



Our partners continue to ensure the safety and wellbeing of children despite the restrictions caused by the pandemic. When safe and possible, workers conducted in-person family visits, while ensuring parents had the opportunity to maintain parenting time with their children. When in-person contact was not possible, virtual options and support were provided to families.



5% spent on administration

95% spent on foster care services

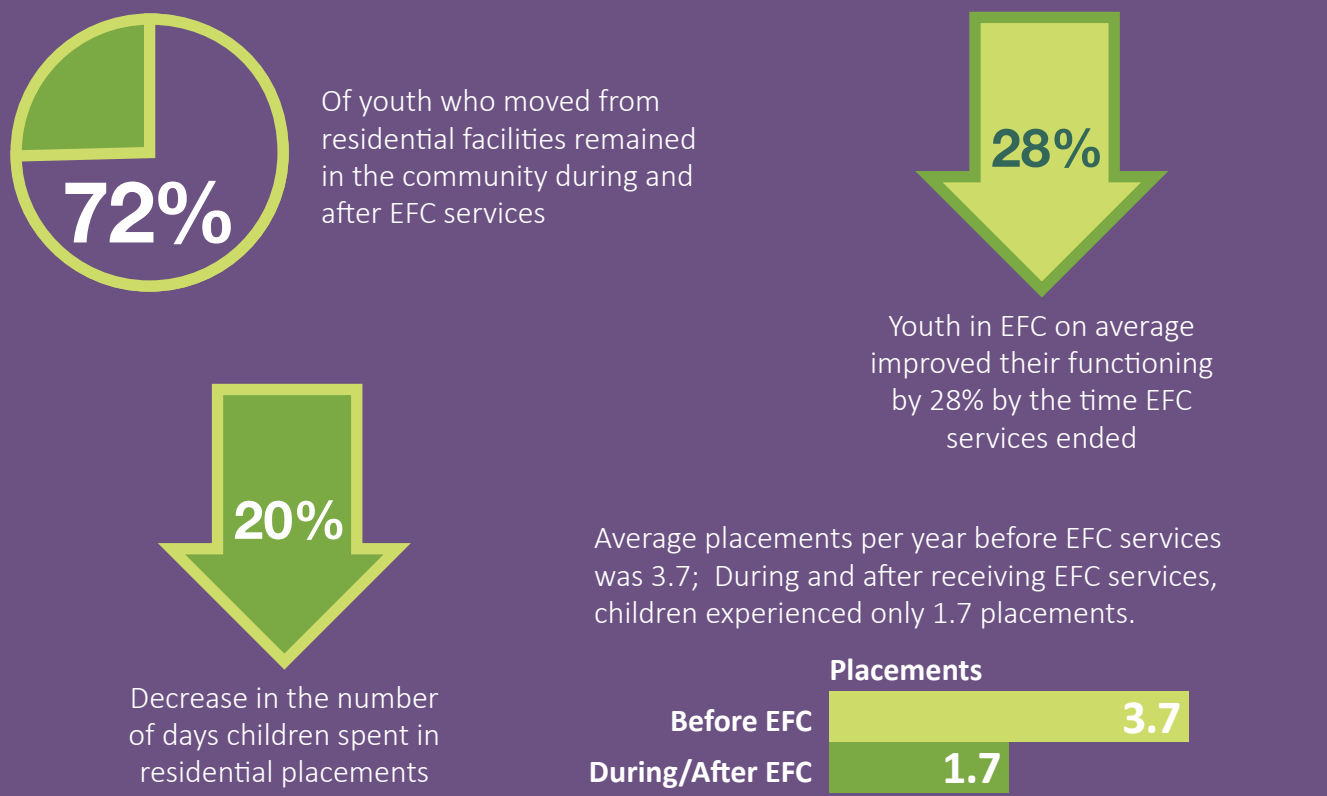


WMPC FINANCES

WMPC passes through 95% of the funds received from its contract with MDHHS to its subcontractors who are providing direct services for children and families experiencing the foster care system. WMPC retains 5% for its administrative costs, which include contract administration, serving as the fiduciary agent, and providing care coordination and continuous quality improvement over the countywide foster care system.

ENHANCED FOSTER CARE

WMPC launched Enhanced Foster Care (EFC), in January 2018. EFC was designed to provide an intensive community-based approach by stabilizing current youth in foster care, diverting youth from being placed out of the community, and deliberately returning youth from residential care back to the community.



After receiving EFC services, youth dramatically improved their functioning per the EFC Evaluation. See the full evaluation [HERE](#)

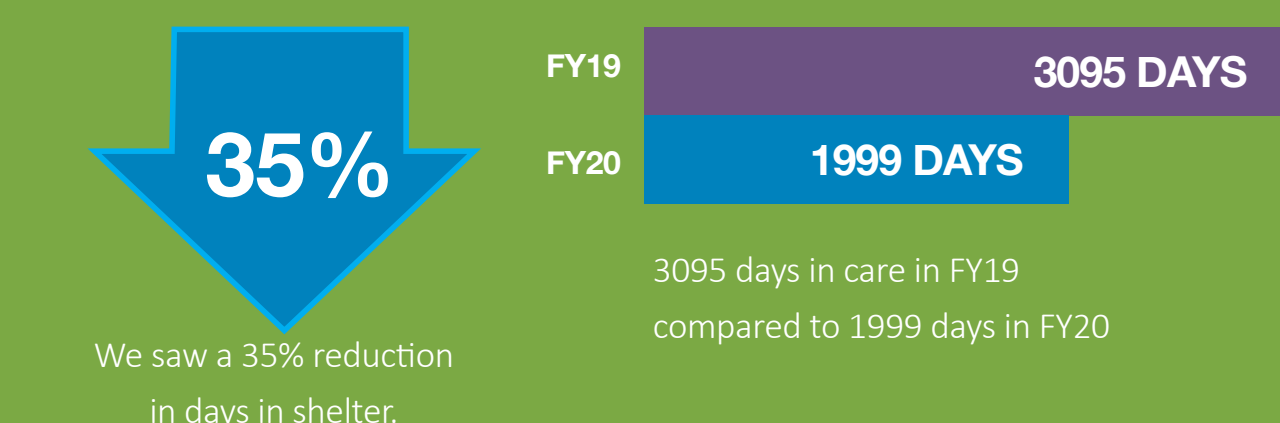
OVER-REPRESENTATION OF KIDS OF COLOR

In 2018, black children were overrepresented in foster care 3.2 times greater than their representation in the 0-18 general Kent County population. That number has decreased to 2.6 in 2020 but remains much higher than desired. Disproportionality is the underrepresentation or overrepresentation of a racial or ethnic group compared to its percentage of the total population.



USE OF EMERGENCY SHELTER

In an effort to place children in the community vs. an institutional setting, WMPC and our partners worked diligently to reduce the number of days children spent in shelter in FY20, and our efforts paid off!



INCREASED SAFETY FOR CHILDREN IN FOSTER CARE

WMPC and our partner agencies are committed to keeping children experiencing foster care safe. For the full report and details of the results, read the CFSR report on our website.

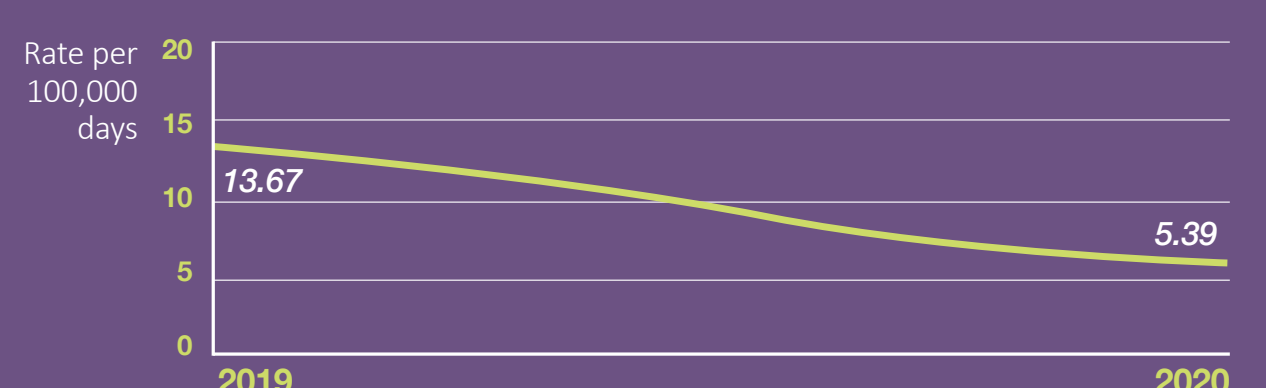
[Read the full FY20 Annual Performance Report HERE](#)

FOSTER PARENT LICENSING

Each year, in collaboration with the five private foster care agencies in Kent County and the Kent County Department of Health and Human Services, WMPC establishes a goal related to the number of new, unrelated foster homes that will be licensed. In FY20, that number was 89. We are delighted to share that our community partners met and surpassed this goal, licensing 100 new foster homes! Though we certainly are proud of this accomplishment, our work is not done. We need more families that are willing to share their homes with the children and youth placed in foster care. We have expanded our goal in FY21 to 108 homes, a number we know we can meet, but not without your help. Are you ready to open your home and your heart to a child in foster care?

[CONTACT US HERE](#)

[TO LEARN MORE VISIT WMPC HERE](#)



The occurrence of maltreatment in care decreased significantly from FY19 to FY20. In FY20 maltreatment in care occurred at a rate of 5.4 per 100,000 days spent in care, compared to an occurrence rate of 13.7 per 100,000 days spent in care in FY19.